



ENVIRONMENTAL PRODUCT DECLARATION

In accordance with ISO 14025 and EN 15804:2012+A2:2019/AC:2021 for:

MAPEPOXY BI
(Nordic & Baltic market)



An EPD should provide current information and may be updated if conditions change. The stated validity is, therefore, subject to the continued registration and publication at www.environdec.com."

Programme:	Programme operator:	EPD registration number:	Publication date:	Valid until:	Geographical scope:
The International EPD® System; www.environdec.com	EPD International AB	S-P-11889	2023-12-15	2028-12-14	Global



1 COMPANY DESCRIPTION / GOAL & SCOPE

Founded in 1937 in Milan, Italy, Mapei produces adhesives and complementary products for laying all types of floor, wall and coating materials, and also specializes in other chemical products used in the building industry, such as waterproofing products, specialty mortars, admixtures for concrete, cement additives, products for underground constructions and for the restoration of concrete and historical buildings. There are currently 100 subsidiaries in the Mapei Group, with a total of 86 production facilities located around the world in 36 different countries and in 5 different continents. Mapei also has 32 central laboratories. Most locations are ISO 9001 and ISO 14001 or EMAS-certified.

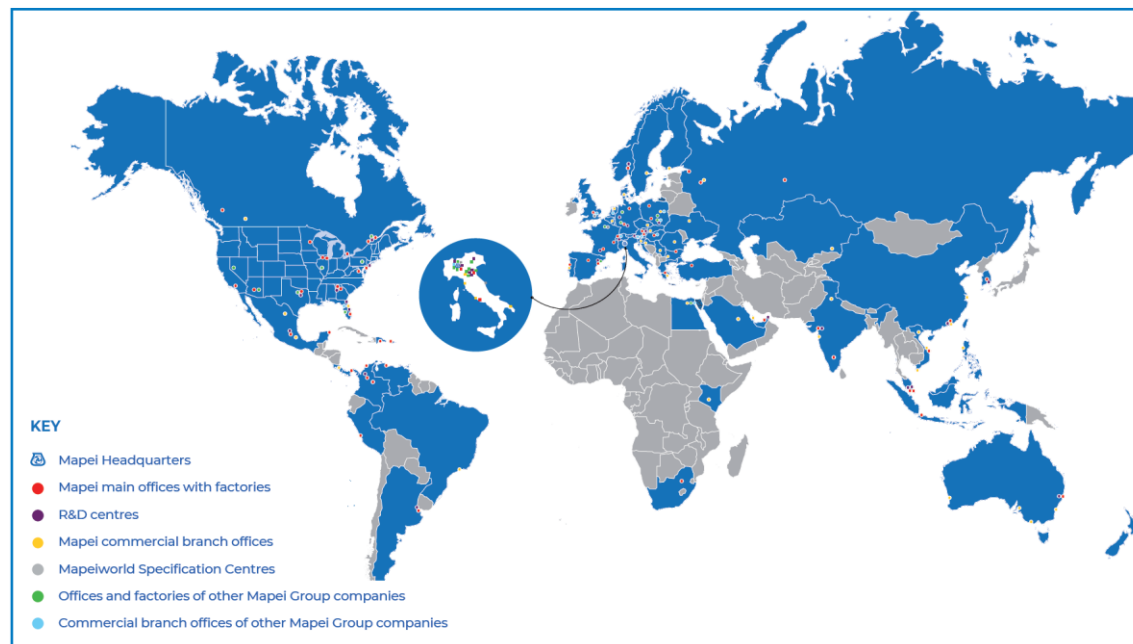
Mapei invests 12% in its company's total work-force and 5% of its turnover in Research & Development; in particular, 70% of its R&D efforts are directed to develop eco-sustainable and environmentally friendly products, which give important contribution to all major green rating systems for eco-sustainable buildings such as LEED and BREEAM. Furthermore, Mapei has developed a sales and technical service network with offices all over the world and offers an efficient Technical Assistance Service that is valued by architects, engineers, contractors and owners.

Mapei Nordic production site is located in Sagstua, Norway. The production site consists of 5 factories: two factories for powder-based products, two factories for liquid admixtures and one factory for thermosetting plastic-based products. The total size of the buildings is 24.000 sqm. The energy in these factories is provided from water electricity, geothermal heating and remaining approximately 10 % heated by bio-oil. Mapei Nordic focuses both on energy and on logistic optimisation, as for example the systematic Lean based improvement work.

With 60 – 80 trailers per day, and 1650 transport lines, requires Mapei to work actively on optimizing our logistic process.

The goal of the study is to provide necessary data and documentation to produce an EPD according to the requirements of PCR Environdec (Version 1.3.1, 2023-07-08) under EN 15804:2012+A2:2019/AC:2021 and to have more comprehension about the environmental impacts related to **Mapepoxy BI** manufactured in Mapei AS located in Sagstua (NO), including packaging of the finished products.

Target audiences of the study are customers and other parties with an interest in the environmental impacts of **Mapepoxy BI**. This analysis shall not support comparative assertions intended to be disclosed to the public.



2 PRODUCT DESCRIPTION

Mapepoxy BI is a two-component solvent free epoxy adhesive. Mapepoxy BI has a very high capillary activity due to its unique formulation, and adheres perfectly to concrete and steel. Mapepoxy BI does not contain any benzyl alcohol or other plasticizers than migrate from the product after curing when subjected to normal conditions. The product will therefore remain unchanged throughout the lifetime of the construction. Mapepoxy BI has very high mechanical strength and has a very good ability to maintain adhesion to concrete also in damp condition. Mapepoxy BI polymerizes without shrinkage and once hardened is waterproof. The product is rated by FHI (The Public Health Dept.) for use in contact with drinking water and complies with the principles defined in EN 1504-9 standards ("Products and systems for protecting and repairing concrete structures. Definitions, requirements, quality control and conformity assessment. General principles for the use and application of systems"), and the requirements of EN 1504-5 "Concrete injection".

Mapepoxy BI is available in 1 kg set (Component A: 0,79 kg, component B = 0,21 kg). 4,2 kg sett (Component A: 3,3 kg, component B = 0,9 kg.)

For more information see the TDS (Technical Data Sheet) on Mapei AS website (www.mapei.com/NO).

3 CONTENT DECLARATION

The main components and ancillary materials of the products included in this EPD are the following:

Table 1: Composition referred to 1 kg of product packaged in 4,2 kg set.

Materials	Percentage (%) by mass	Post-consumer recycled material weight-%	Biogenic Material, weight-% and kgC/kg
Resins	< 75%	0	0 resp. 0
Reactive diluent	< 25%	0	0 resp. 0
Amines	< 35%	0	0 resp. 0
Packaging Materials	Weight-% (versus the product)		Weight biogenic carbon, kg C/kg
Metal	< 0,2%		0
LDPE	< 0,5%		0
Wood	< 0,1%		0,43

The product does not contain a concentration higher than 0,1% (by unit weight) of either carcinogenic substances or substances of very high concern (SVHC) on the REACH Candidate List published by the European Chemicals Agency.

4 DECLARED UNIT AND REFERENCE SERVICE LIFE

The declared unit is 1 kg of finished product packaging included.

Due to the selected system boundary, the reference service life of the products is not specified.

5 SYSTEM BOUNDARIES AND ADDITIONAL TECHNICAL INFORMATION

The approach is “cradle to gate” (A1–A3) with modules C1–C4 and module D and optional modules (A1–A3 + A4 – A5 + C + D):

- A1, A2, A3 (Product stage): extraction and processing of raw materials and packaging (A1), transportation up to the factory gate (A2), manufacturing of the finished product (A3).
- A4 – A5 (Construction process stage): transport of the finished product to final customers and installation into the building.
- C1, C2, C3, C4 (End of Life stage): With a collection rate of 100% as C&D waste, the transports are carried out by lorry over 100 km (C2). A recycling ratio (C3) of 70% is considered in accordance with the European Directive 2008/98/CE. The remaining 30% is landfilled (C4).
- D (Resource recovery stage): contains credits from the recycling of the product in module C3 and the credit from the incineration of a fraction of packaging waste. At the end of life, the product can be collected and recycled for use in substitution of virgin raw aggregates.

Table 2: System boundaries

	Product stage			Construction process stage		Use stage							End of life stage				Resource recovery stage
	Raw material supply	Transport	Manufacturing	Transport	Construction installation	Use	Maintenance	Repair	Replacement	Refurbishment	Operational energy use	Operational water use	De-construction demolition	Transport	Waste processing	Disposal	Reuse-Recovery-Recycling-potential
Module	A1	A2	A3	A4	A5	B1	B2	B3	B4	B5	B6	B7	C1	C2	C3	C4	D
Modules declared	X	X	X	X	X	MND	MND	MND	MND	MND	MND	MND	X	X	X	X	X
Geography	NO	NO, EU	NO	EU	EU	-	-	-	-	-	-	-	EU	EU	EU	EU	EU
Specific data	> 90 %					-	-	-	-	-	-	-	-	-	-	-	-
Variation – products	0 %					-	-	-	-	-	-	-	-	-	-	-	-
Variation – sites	0 %					-	-	-	-	-	-	-	-	-	-	-	-

MND: Module Not Declare

A brief description of production process is the following:

The production process starts from raw materials, that are purchased from external and intercompany suppliers and stored in the plant. Bulk raw materials are stored in specific silos and added automatically in the production mixer, according to the formula of the product. Other raw materials, supplied in bags, big bags or tanks, are stored in the warehouse and added automatically or manually in the mixer. The production is a discontinuous process, in which all the components are mechanically mixed in batches. The semi-finished product is then packaged, put on wooden pallets and stored in the finished products warehouse. The quality of final products is controlled before the sale.

Figure 1: production process detail

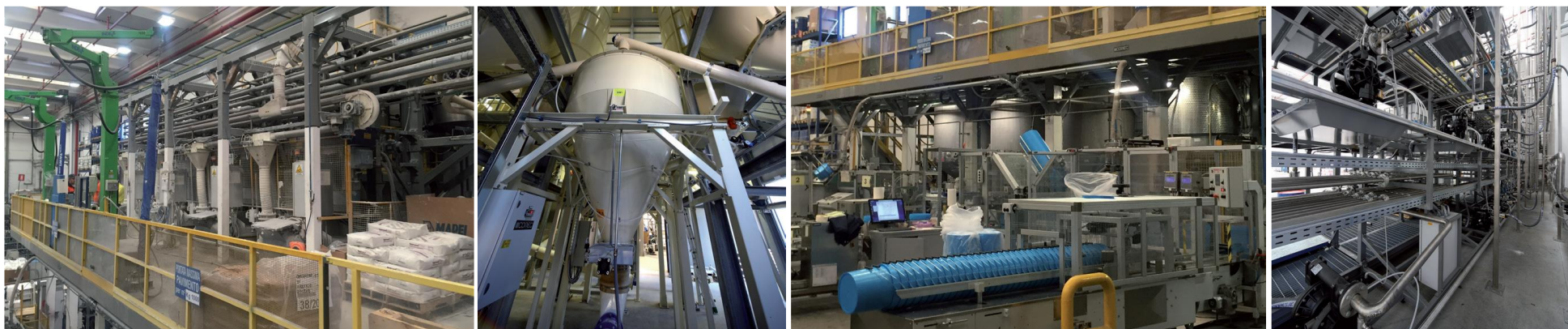


Table 3: Transport to the building site (A4)

Scenario information	Value	Unit
Means of transport: truck-trailer euro 6, gross weight 34-40 t, payload capacity 27 t		
Diesel consumption	0,002	l/100km
Transport distance	1000	km
Capacity utilisation (including empty runs)	85	%
Gross density of products transported	A: 1160; B: 870	kg/m ³
Capacity utilisation volume factor	1	-

** This is a conservative scenario with regard to the type of truck and distance. If the finished product is delivered by an electric truck, please consider a specific GWP coming from the truck manufacturer (if available)*

Table 4: Installation into the building (A5)

Scenario information	Value	Unit
Ancillary materials for installation	0	kg
Water use	0	m ³
Other resources use	0	kg
Electricity grid mix (NO)	0,0704	MJ
Waste materials on building site before waste processing, generated by the product's installation (specified by type)	0,0669 (wood) 0,00125 (plastics) 0,144 (metal)	kg
Output materials (specified by type) as result of waste processing at the building site e.g. of collection for recycling, for energy recovery, disposal (specified by route)	0,0317 (recycling) 0,0364 (incineration)	kg
Direct emission to ambient air, soil and water	0	kg

Table 5: End of Life (C1-C4)

Scenario information	Value	Unit
Collected separately	0	kg
Collected with mixed construction waste	1	kg
Reuse	0	kg
Recycling	0,7	kg
Energy recovery	0	kg
Landfill	0,3	km
Transport to recycling	100	km
Transport to landfill	100	km

6 CUT-OFF RULES AND ALLOCATION

Criteria for the exclusion of inputs and outputs (cut-off rules) in the LCA, information modules and any additional information are intended to support an efficient calculation procedure. They are not applied in order to hide data. Cut-off criteria, where applied, are described in Table 6.

Input flows are covered for the whole formula.

Table 6: Cut-off criteria

Process excluded from study	Cut-off criteria	Quantified contribution from process
A3: production (auxiliary materials)	Less than 10^{-5} kg/kg of finished product	Sensitivity study demonstrates a relative contribution lower than 0,5%

For the allocation procedure and principles consider the following table (Table 7):

Table 7: Allocation procedure and principles

Module	Allocation Principle
A1	All data are referred to 1 kg of product A1: electricity is allocated to the specific production line
A3	All data are referred to 1 kg of packaged product A3-wastes: all data are allocated to the whole production plant

7 ENVIRONMENTAL PERFORMANCE AND INTERPRETATION



GWP

Climate change

GWPtotal - Global Warming Potential refers to the emission/presence of GHGs (greenhouse gases) in the atmosphere (mainly CO₂, N₂O, CH₄) which contribute to the increase in the temperature of the planet.

GWP-total considers:

- GWP-fossil
- GWP-biogenic
- GWP-luluc (land use and land use change)



POCP

Photochemical ozone formation

The Photochemical Ozone Creation Potential is the ozone formation in low atmosphere. This is quite common in the cities where a great amount of pollutants (like VOC and NO_x) are emitted every day (industrial emissions and vehicles). It is mainly diffused during the summertime.



ODP

Ozone Depletion

Ozone Depletion Potential refers to the degradation of the stratospheric layer of the ozone involved in blocking the UV component of sunrays. Depletion is due to particularly reactive components that originate from chlorofluorocarbon (CFC) or chlorofluoromethane (CFM).



**ADP
minerals&metals**

Depletion of abiotic resources – minerals and metals

Abiotic Depletion Potential elements refers to the depletion of the mineral resources.



AP

Acidification

Acidification Potential refers to the emission of specific acidifying substances (i.e. NO_x, SO_x) in the air. These substances decrease the pH of the rainfall with predictable damages to the ecosystem.



ADP-fossil

Depletion of abiotic resources – fossil fuel

Abiotic Depletion Potential fossil fuel refers to the depletion of the fossil fuel resources.



EP

Eutrophication

Eutrophication Potential refers to the nutrient enrichment, which determines unbalance in ecosystems and causes the death of the fauna and decreased biodiversity in flora.

It considers:

- EP-freshwater: aquatic freshwater
- EP-marine: aquatic marine
- EP-terrestrial



WDP

Water use

It expresses the potential deprivation of water, that consists in not having the water needs satisfied.

The following tables show the environmental impacts for the products considered according to the requirements of EN15804:2012+A2:2019/AC:2021.

The results are referred to the declared unit (see § 4). The additional environmental indicators are not declared. The estimated impact results are only relative statements, which do not indicate the endpoints of the impact categories, exceeding threshold values, safety margins and/or risks.

We discourage the use of the outcomes from modules A1-A3 without considering the results obtained from modules C.

NOTE: in the whole document, the comma “,” is the decimal separator, while the point “.” is the thousands separator.

Mapepoxy BI

(1 kg of product in 4,2 kg set)

Table 8: Mapepoxy BI: Potential environmental impact – mandatory indicators according to EN 15804 referred to 1 kg of product in 4,2 kg set.

Indicator	Unit	A1	A2	A3	A1 – A3	A4	A5	C1	C2	C3	C4	D
GWP_{TOTAL}	(kg CO ₂ eq.)	6,19E+00	8,35E-02	2,13E-01	6,48E+00	7,45E-02	1,24E-01	1,56E-03	8,08E-03	1,78E-03	4,47E-03	-1,08E-02
GWP _{FOSSIL}	(kg CO ₂ eq.)	6,09E+00	7,93E-02	2,77E-01	6,45E+00	7,05E-02	5,33E-02	1,55E-03	7,65E-03	1,76E-03	4,44E-03	-1,08E-02
GWP _{BIOGENIC}	(kg CO ₂ eq.)	9,12E-02	3,64E-03	-6,49E-02	2,99E-02	3,32E-03	7,08E-02	1,35E-05	3,59E-04	5,95E-06	1,25E-05	-4,71E-05
GWP _{LULUC}	(kg CO ₂ eq.)	1,06E-03	7,14E-04	1,05E-04	1,88E-03	6,50E-04	2,74E-05	1,69E-07	7,04E-05	1,35E-05	1,40E-05	-6,80E-07
AP	(kg CFC 11 eq.)	7,98E-03	3,15E-04	4,36E-04	8,73E-03	8,66E-05	3,97E-05	3,30E-06	9,63E-06	9,35E-06	3,20E-05	-1,30E-05
ODP	(mol H ⁺ eq.)	2,54E-11	1,01E-14	8,23E-11	1,08E-10	9,14E-15	1,21E-13	2,86E-14	9,89E-16	3,00E-15	1,15E-14	-7,87E-14
EP _{FRESHWATER}	(kg P eq.)	2,86E-05	2,82E-07	4,20E-06	3,30E-05	2,57E-07	3,74E-08	5,80E-09	2,78E-08	6,10E-09	9,08E-09	-1,63E-08
EP _{MARINE}	(kg N eq.)	2,70E-03	1,28E-04	1,46E-04	2,98E-03	2,89E-05	1,33E-05	7,90E-07	3,24E-06	4,29E-06	8,26E-06	-3,87E-06
EP _{TERRESTRIAL}	(mol N eq.)	2,89E-02	1,43E-03	1,55E-03	3,18E-02	3,48E-04	1,49E-04	8,26E-06	3,91E-05	4,74E-05	9,09E-05	-4,14E-05
POCP	(kg NMVOC eq.)	9,00E-03	2,69E-04	3,84E-04	9,66E-03	7,44E-05	3,49E-05	2,11E-06	8,27E-06	1,16E-05	2,49E-05	-1,08E-05
ADP _{MINERALS&METALS*}	(kg Sb eq.)	3,88E-07	5,13E-09	7,51E-08	4,68E-07	4,65E-09	1,19E-09	2,39E-10	5,04E-10	1,92E-09	2,08E-10	-7,27E-10
ADP _{FOSSIL*}	(MJ)	1,29E+02	1,07E+00	4,19E+00	1,34E+02	9,57E-01	1,87E-01	3,25E-02	1,04E-01	3,53E-02	6,00E-02	-1,98E-01
WDP*	(m ³ world eq.)	4,60E-01	9,33E-04	1,22E-02	4,73E-01	8,49E-04	6,92E-03	3,40E-04	9,19E-05	3,48E-04	4,95E-04	-9,41E-04

GWP_{TOTAL}: Global Warming Potential total; **GWP_{FOSSIL}**: Global Warming Potential fossil fuels; **GWP_{BIOGENIC}**: Global Warming Potential biogenic; **GWP_{LULUC}**: Global Warming Potential land use and land use change; **ODP**: Depletion Potential of the stratospheric Ozone layer; **AP**: Acidification Potential; **EP_{FRESHWATER}**: Eutrophication Potential, freshwater; **EP_{MARINE}**: Eutrophication Potential, marine; **EP_{TERRESTRIAL}**: Eutrophication Potential, terrestrial; **POCP**: Formation potential of tropospheric ozone; **ADP_{MINERALS&METALS*}**: Abiotic Depletion Potential for non-fossil resources; **ADP_{FOSSIL*}**: Abiotic Depletion Potential for fossil resources; **WDP***: Water Deprivation Potential.

*the results of this environmental impact indicator shall be used with care as the uncertainties on these results are high or as there is a limited experience with the indicator.

Table 9: Mapepoxy BI: Potential environmental impact – additional mandatory and voluntary indicators referred to 1 kg of product in 4,2 kg set

Indicator	Unit	A1	A2	A3	A1 – A3	A4	A5	C1	C2	C3	C4	D
GWP-GHG	(kg CO ₂ eq.)	6,12E+00	8,02E-02	2,80E-01	6,48E+00	7,14E-02	5,34E-02	1,56E-03	7,74E-03	1,78E-03	4,47E-03	-1,08E-02

GWP-GHG: This indicator accounts for all greenhouse gases except biogenic carbon dioxide uptake and emissions and biogenic carbon stored in the product. As such, the indicator is identical to GWP-total except that the CF for biogenic CO₂ is set to zero. This new indicator cannot be compared with the GWP-GHG of the EPD according to the old PCR 1.2 (and earlier versions).

Table 10: Mapepoxy BI: Use of resources referred to 1 kg of product in 4,2 kg set.

Indicator	Unit	A1	A2	A3	A1 – A3	A4	A5	C1	C2	C3	C4	D
PERE	MJ	1,31E+01	7,64E-02	1,86E+00	1,51E+01	6,96E-02	1,28E+00	1,94E-02	7,54E-03	3,28E-03	9,78E-03	-5,37E-02
PERM	MJ	0,00E+00	0,00E+00	1,20E+00	1,20E+00	0,00E+00	-1,20E+00	0,00E+00	0,00E+00	0,00E+00	0,00E+00	0,00E+00
PERT	MJ	1,31E+01	7,64E-02	3,06E+00	1,63E+01	6,96E-02	8,37E-02	1,94E-02	7,54E-03	3,28E-03	9,78E-03	-5,37E-02
PENRE	MJ	1,29E+02	1,08E+00	4,01E+00	1,34E+02	9,61E-01	3,70E-01	3,25E-02	1,04E-01	3,53E-02	6,01E-02	-1,98E-01
PENRM	MJ	0,00E+00	0,00E+00	1,83E-01	1,83E-01	0,00E+00	-1,83E-01	0,00E+00	0,00E+00	0,00E+00	0,00E+00	0,00E+00
PENRT	MJ	1,29E+02	1,08E+00	4,20E+00	1,34E+02	9,61E-01	1,87E-01	3,25E-02	1,04E-01	3,53E-02	6,01E-02	-1,98E-01
SM	kg	0,00E+00	0,00E+00	0,00E+00	0,00E+00	0,00E+00	0,00E+00	0,00E+00	0,00E+00	0,00E+00	0,00E+00	0,00E+00
RSF	MJ	0,00E+00	0,00E+00	0,00E+00	0,00E+00	0,00E+00	0,00E+00	0,00E+00	0,00E+00	0,00E+00	0,00E+00	0,00E+00
NRSF	MJ	0,00E+00	0,00E+00	0,00E+00	0,00E+00	0,00E+00	0,00E+00	0,00E+00	0,00E+00	0,00E+00	0,00E+00	0,00E+00
FW	m ³	2,15E-02	8,38E-05	9,82E-04	2,25E-02	7,63E-05	1,95E-04	1,56E-05	8,26E-06	1,01E-05	1,52E-05	-4,34E-05

PERE: Use of renewable primary energy excluding renewable primary energy resources used as raw materials; **PERM:** Use of renewable primary energy resources used as raw materials; **PERT:** Total use of renewable primary energy resources (primary energy and primary energy resources used as raw materials); **PENRE:** Use of non-renewable primary energy excluding non-renewable primary energy resources used as raw materials; **PENRM:** Use of non-renewable primary energy resources used as raw materials; **PENRT:** Total use of non-renewable primary energy resources (primary energy and primary energy resources used as raw materials); **SM:** Use of secondary material; **RSF:** Use of renewable secondary fuels; **NRSF:** Use of non-renewable secondary fuels; **FW:** Net use of fresh water.

Table 11: Mapepoxy BI: Waste production and output flows referred to 1 kg of product in 4,2 kg set.

Indicator	Unit	A1	A2	A3	A1 – A3	A4	A5	C1	C2	C3	C4	D
HWD	kg	1,22E-08	3,33E-12	4,84E-02	4,84E-02	2,98E-12	-9,07E-12	-2,54E-12	3,22E-13	-9,15E-14	1,31E-12	-1,22E-11
NHWD	kg	9,61E-02	1,62E-04	2,98E-03	9,92E-02	1,47E-04	6,38E-03	2,39E-05	1,59E-05	9,29E-06	3,00E-01	-9,41E-05
RWD	kg	1,88E-03	2,00E-06	2,42E-04	2,13E-03	1,80E-06	2,12E-05	5,16E-06	1,95E-07	4,74E-07	6,85E-07	-1,42E-05
Components for re-use	kg	0,00E+00	0,00E+00	0,00E+00	0,00E+00	0,00E+00	0,00E+00	0,00E+00	0,00E+00	0,00E+00	0,00E+00	0,00E+00
Materials for recycling	kg	0,00E+00	0,00E+00	2,52E-03	2,52E-03	0,00E+00	3,20E-02	0,00E+00	0,00E+00	7,00E-01	0,00E+00	0,00E+00
Materials for energy recovery	kg	0,00E+00	0,00E+00	0,00E+00	0,00E+00	0,00E+00	3,52E-02	0,00E+00	0,00E+00	0,00E+00	0,00E+00	0,00E+00
Exported energy, electricity	MJ	0,00E+00	0,00E+00	0,00E+00	0,00E+00	0,00E+00	4,94E-02	0,00E+00	0,00E+00	0,00E+00	0,00E+00	0,00E+00
Exported energy, thermal	MJ	0,00E+00	0,00E+00	0,00E+00	0,00E+00	0,00E+00	9,27E-02	0,00E+00	0,00E+00	0,00E+00	0,00E+00	0,00E+00

HWD: Hazardous waste disposed; **NHWD:** Non-Hazardous waste disposed; **RWD:** Radioactive waste disposed

Table 12: Mapepoxy BI: Information on biogenic carbon content at the factory gate referred to 1 kg of product in 4,2 kg set.

Biogenic Carbon Content	Unit	Quantity
Biogenic carbon content in product	kg C	0,00E+00
Biogenic carbon content in packaging	kg C	2,73E-02

More details about electrical mix used in this EPD, is shown below:

	Data source	GWP-GHG	Unit
Residual electricity grid mix (NO) – 2022	AIB	0,636	kg CO ₂ -eqv/kWh

8 DATA QUALITY

Table 13: Data quality

Dataset & Geographical reference	Database (source)	Temporary reference
A1; A3		
Resins	Sphera Database	2022
Reactive diluent	Sphera Database	2022
Amines	Sphera Database	2022
Residual electricity grid mix (NO)	Sphera Database	2022
Packaging components (EU)	Sphera Database; ecoinvent 3.9.1	2022
A2		
Truck, Euro 5, 27t payload (GLO)	Sphera Database	2022
Light train, gross tonne weight 500t / 363t payload (GLO)	Sphera Database	2022
Oceanic ship (27500 DWT – GLO)	Sphera Database	2022
Diesel for transport (EU)	Sphera Database	2019
Heavy Fuel Oil (EU)	Sphera Database	2019
Electricity grid mix (EU)	Sphera Database	2019
A4		
Truck, Euro 6, 27t payload (GLO)	Sphera Database	2022
Diesel for transport (EU)	Sphera Database	2019
A5		
Tap water from surface water	Sphera Database	2022
Commercial waste in municipal waste incineration plant	Sphera Database	2022
Inert matter on landfill	Sphera Database	2022
Electricity grid mix (NO)	Sphera Database	2019

C1-C4		
Truck (EURO 6 - 9,3 ton payload – GLO)	Sphera Database	2022
Electricity grid mix (EU)	Sphera Database	2019
Diesel for transport (EU)	Sphera Database	2019
Construction waste dumping (EU)	Sphera Database	2022
Construction waste treatment (EU)	Sphera Database	2022

All data included in table above refer to a period between 2019 and 2022; the most relevant ones are specific from supplier, while the others (i.e. transport and minor contribution dataset), come from European and global databases. All dataset are not more than 10 years old according to EN 15804 §6.3.8.2 “Data quality requirements”.

The Quality level concerning datasets used in the EPD can be considered as “very good” or “good” according to Annex E of the EN 15804 (current version).

Primary data concern the year 2022 and represent the whole annual production.

9 ADDITIONAL INFORMATION

9.1 Indication for the calculation of different scenario of module A4 (Transport from the factory to the jobsite)

To calculate the impact of transporting 1 kg of product from the factory gate (Sagstua) to the jobsite, use the following formula:

$$\text{Transport Impact} = EF \text{ (kg/DU)} * \text{distance (km)}$$

EF: Emission Factor; DU: declared Unit

Table 14: The EFs are related to 1 kg of product transported with truck EURO 5 and EURO 6

Impact Category	Unit	EF (EURO 5)	EF (EURO 6)
GWP_{TOTAL}	(kg CO ₂ eq.)/km	6,26E-05	6,15E-05
GWP _{FOSSIL}	(kg CO ₂ eq.) /km	5,92E-05	5,82E-05
GWP _{BIOGENIC}	(kg CO ₂ eq.) /km	2,78E-06	2,74E-06
GWP _{LULUC}	(kg CO ₂ eq.) /km	5,46E-07	5,37E-07
ODP	(kg CFC 11 eq.) /km	7,67E-18	7,55E-18
AP	(mol H ⁺ eq.) /km	1,90E-07	7,15E-08
EP _{FRESHWATER}	(kg P eq.) /km	2,16E-10	2,12E-10
EP _{MARINE}	(kg N eq.) /km	8,62E-08	2,38E-08
EP _{TERRESTRIAL}	(mol N eq.) /km	9,69E-07	2,87E-07
POCP	(kg NMVOC eq.) /km	1,72E-07	6,15E-08
ADP _{MINERALS&METALS}	(kg Sb eq.) /km	3,91E-12	3,85E-12
ADP _{FOSSIL}	(MJ) /km	8,03E-04	7,90E-04
WDP	(m ³ world eq.) /km	7,12E-07	7,01E-07

Example:

If the product is transported by truck (EURO 6) from Sagstua (production plant) to Oslo (Jobsite) for approximately 90 km, the GWP impact will be:

$$\text{GWP}_{\text{total}} = 6,15\text{E-}05 * 90\text{km} = 5,54\text{E-}03 \text{ kg CO}_2\text{eq}$$

10 VERIFICATION AND REGISTRATION

The EPD owner has the sole ownership, liability, and responsibility for the EPD.

EPDs within the same product category but registered in different EPD programmes, or not compliant with EN 15804, may not be comparable. For two EPDs to be comparable, they must be based on the same PCR (including the same version number) or be based on fully-aligned PCRs or versions of PCRs; cover products with identical functions, technical performances and use (e.g. identical declared/functional units); have equivalent system boundaries and descriptions of data; apply equivalent data quality requirements, methods of data collection, and allocation methods; apply identical cut-off rules and impact assessment methods (including the same version of characterisation factors); have equivalent content declarations; and be valid at the time of comparison. For further information about comparability, see EN 15804 and ISO 14025.

CEN standard EN15804 served as the Core Product Category Rules (PCR)	
PCR:	PCR 2019:14 Construction products (EN 15804:A2), Version 1.3.1, 2021-02-05, UN CPC code 54
PCR review was conducted by:	The Technical Committee of the International EPD® System. See www.environdec.com/TC for a list of members. Review chair: Claudia A. Peña, University of Concepción, Chile. The review panel may be contacted via the Secretariat www.environdec.com/contact .
Independent third-party verification of the declaration and data, according to ISO 14025:2006:	<input checked="" type="checkbox"/> EPD Process Certification <input type="checkbox"/> EPD Verification
Third party verifier:	Certiquality S.r.l. Number of accreditations: 0008PRD rev.000
Accredited or approved by:	Accredia
Procedure for follow-up of data during EPD validity involves third-party verifier	<input checked="" type="checkbox"/> Yes <input type="checkbox"/> No

11 REFERENCES

- EN 15804: SUSTAINABILITY OF CONSTRUCTION WORKS - ENVIRONMENTAL PRODUCT DECLARATIONS - CORE RULES FOR THE PRODUCT CATEGORY OF CONSTRUCTION PRODUCTS
- EUROPEAN DIRECTIVE 94/62/EC
- EUROPEAN DIRECTIVE 2008/98/EC
- EUROPEAN RESIDUAL MIXES VERSION 1.0, 2023-06-01 (AIB: ASSOCIATION OF ISSUING BODIES)
- GENERAL PROGRAMME INSTRUCTIONS OF THE INTERNATIONAL EPD® SYSTEM. VERSION 4.0
- ISO 14025 ENVIRONMENTAL LABELS AND DECLARATIONS - TYPE III ENVIRONMENTAL DECLARATIONS - PRINCIPLES AND PROCEDURES
- ISO 14044 ENVIRONMENTAL MANAGEMENT – LIFE CYCLE ASSESSMENT – REQUIREMENTS AND GUIDELINES
- PCR 2019:14 CONSTRUCTION PRODUCTS (EN 15804: A2), UN CPC CODE 54; VERSION 1.3.1

CONTACT INFORMATION



EPD owner:

Mapei AS

www.mapei.com/NO



LCA author:

Mapei SpA

www.mapei.it;

Environmental Sustainability Office



The International EPD® System

Address: EPD International AB

Programme
operator:

Box 210 60

SE-100 31 Stockholm

Sweden

Website: www.environdec.com

E-mail: info@environdec.com



HEAD OFFICE

MAPEI SpA

Via Cafiero, 22 - 20158 Milan

Tel. +39-02-37673.1

mapei.com

mapei@mapei.it

